



Palmer Access

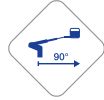
BRONTO S56 XR



Working Height
56m



Platform Height
54m



Lateral Outreach
38.5m



Jib Angle
180°



Wheelbase
6.45m



Total Weight
26,000 Kg



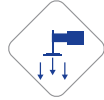
Truck Height
3.8m



Truck Length
12m



Siting Inclination
+/- 3°



MAX Loading
190 KN



Cage
Dimensions
1.05 x 2.4m



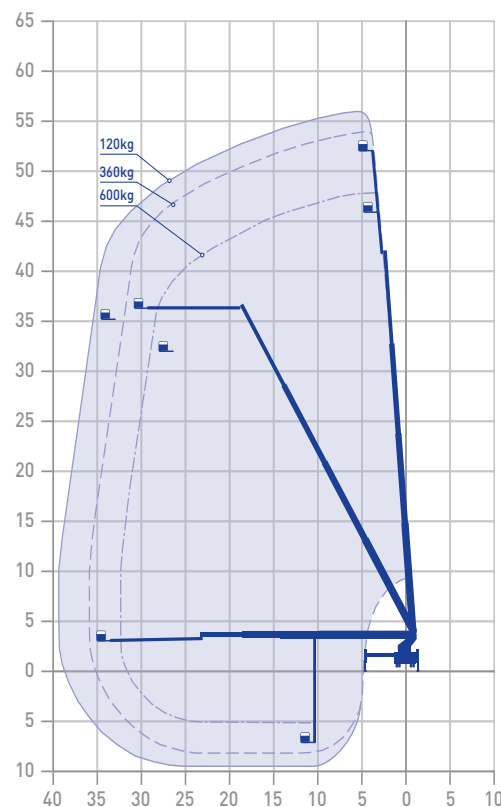
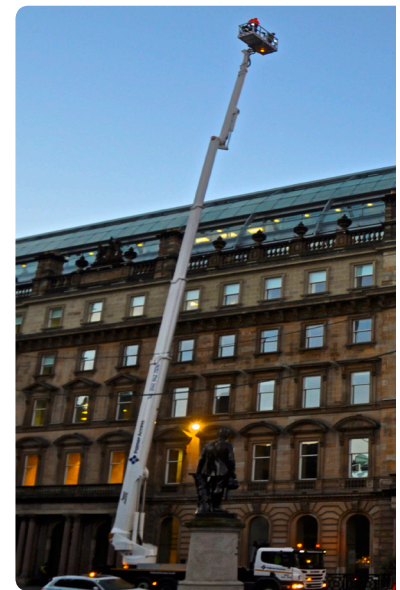
Cage
Extension
1.05 x 3.7m



Cage Capacity
600Kg



Cage Rotation
+/- 90°



Operated Hire:

- Our plant operators are CPCS, CSCS, IPAF qualified and First Aiders
- Excellent timekeeping, reliability and productivity are assured
- Fully trained, competent and experienced Operatives having worked on many major sites across the UK

Features:

- Power to the basket (110V)
- Basket and Chassis fitted with a LED lighting system for safe night working.
- Booms fitted with air and water lines, suitable for high level water testing
 - Variable Jacking
- Horizontal Outreach 39M
- Safe Working Load 600Kg

Available Attachments:

- Fully integrated hydraulic Cage winch capable of lifting 300Kg
- Specialist out of cage panel lifting systems (for glass, signage and general panels)
- Chalwyn valve and spark arrestor can be fitted for industrial applications: Petrochemical plants and refineries
- Chassis-to-earth bonding kits for industrial and high voltage electrical work

APPLICATIONS: TV, Film and Media, Sporting events, Glazing-Lifting, Cladding, Install and replacement. Telecoms, Roof works, Dock & Shipping, Wind Farms, Military installations, High Level Signage, National Grid, Refineries, Power Stations, Construction, Maintenance, Tree Surgery, Surveying.

Palmer Access Ltd.
70 Lancefield Street, Glasgow G3 8JD
 e: info@palmeraccess.co.uk t: 0345 222 1932



Palmer Access