



# Palmer Access

## BRONTO XDT 44M



Working Height  
44m



Platform Height  
42m



Lateral Outreach  
24m



Jib Angle  
180°



Total Weight  
18,000 Kg



Truck Height  
3.8m



Truck Length  
10m



Siting Inclination  
+/- 3°



Cage  
Dimensions  
1.05 x 2.4m



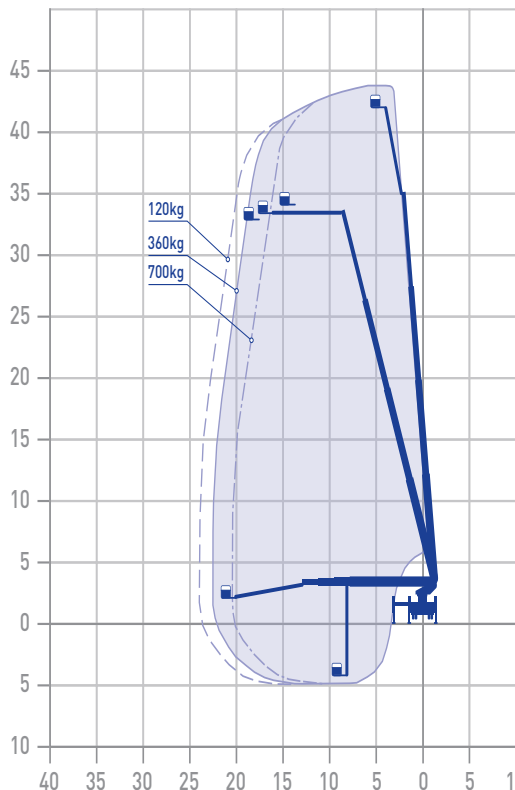
Cage Extension  
1.05 x 3.7m



Cage Capacity  
700Kg



Cage Rotation  
+/- 90°



### Operated Hire:

- Our plant operators are CPCS, CSCS, IPAF qualified and First Aiders
- Excellent timekeeping, reliability and productivity are assured
- Fully trained, competent and experienced Operatives having worked on many major sites across the UK

### Features:

- Zero tail swing
- Automatic outrigger levelling
- Fully variable outrigger jacking
- Variable cage load with epitomised outreach
  - 2 x 90 degrees cage slewing
  - SWL of 700 kg
- Boom and cage winch options
- Changeable working cage options (e.g. rotating TV camera cage)

### Available Attachments:

- Specialist out of cage panel lifting systems (for glass, signage and general panels)
- Chalwyn valve and spark arrestor can be fitted for industrial applications: Petrochemical plants and refineries
- Chassis-to-earth bonding kits for industrial and high voltage electrical work

APPLICATIONS: TV, Film and Media, Sporting events, Glazing-Lifting, Cladding, Install and replacement Telecoms, Roof works, Dock & Shipping, High Level Signage, National Grid, Wind Turbines, Refineries, Power Stations, Construction, Maintenance, Tree Surgery, Surveying.

**Palmer Access Ltd.**  
**70 Lancefield Street, Glasgow G3 8JD**  
**e: info@palmeraccess.co.uk t: 0345 222 1932**

