



# Palmer Access

## BRONTO XDT 36M



Working Height  
36m



Platform Height  
34m



Lateral  
Outreach  
27m



Jib Angle  
180 degrees



Total Weight  
18,000 Kg



Truck Height  
3.8m



Truck Length  
9.8m



Siting  
Inclination  
+/- 3°



Cage  
Dimensions  
1.05 x 2.4m



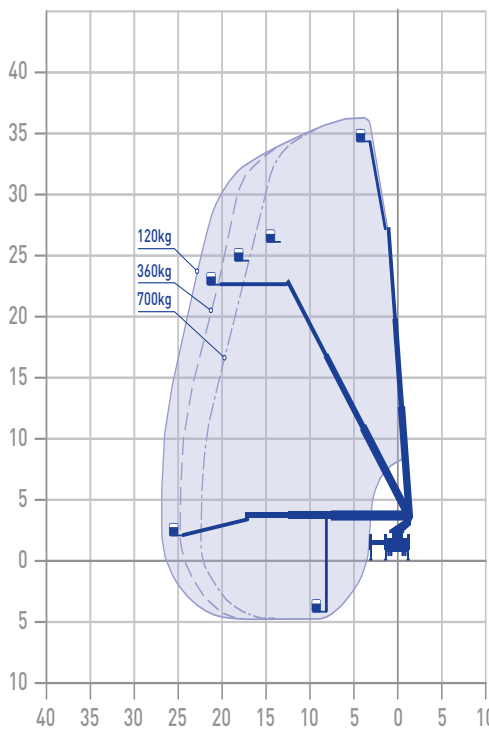
Cage  
Extension  
1.05 x 3.7m



Cage  
Capacity  
600 Kg



Cage  
Rotation  
+/- 90°



**Operated Hire:**

- Our plant operators are CPCS, CSCS, IPAF qualified and First Aiders
- Excellent timekeeping, reliability and productivity are assured
- Fully trained, competent and experienced Operatives having worked on many major sites across the UK

**Features:**

- Zero tail swing
- Automatic outrigger levelling
- Fully variable outrigger jacking
- Variable cage load with epitomised outreach
  - 2 x 90 degrees cage slewing
  - SWL of 700 kg
  - Fault finding system

**Available Attachments:**

- Specialist out of cage panel lifting systems (for glass, signage and general panels)
- Chalwyn valve and spark arrestor can be fitted for industrial applications: Petrochemical plants and refineries
  - Chassis-to-earth bonding kits for industrial and high voltage electrical work

APPLICATIONS: TV, Film and Media, Sporting events, Glazing-Lifting, Cladding, Install and replacement, High level Telecoms, Roof works, Dock & Shipping, Wind Farms, Military installations, High Level Signs, National Grid, Wind Turbines, Refineries, Power Stations, Construction, Tree Surgery, Surveying.

**Palmer Access Ltd.**  
**70 Lancefield Street, Glasgow G3 8JD**  
**e: info@palmeraccess.co.uk t: 0345 222 1932**

