



Palmer Access

RUTHMANN 33M



Working Height
33m



Platform Height
31m



Lateral Outreach
21.2m



Jib Angle
185°



Wheelbase
3.9m



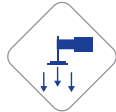
Total Weight
7.5 ton



Truck Length
8.79m



Siting Inclination
5°



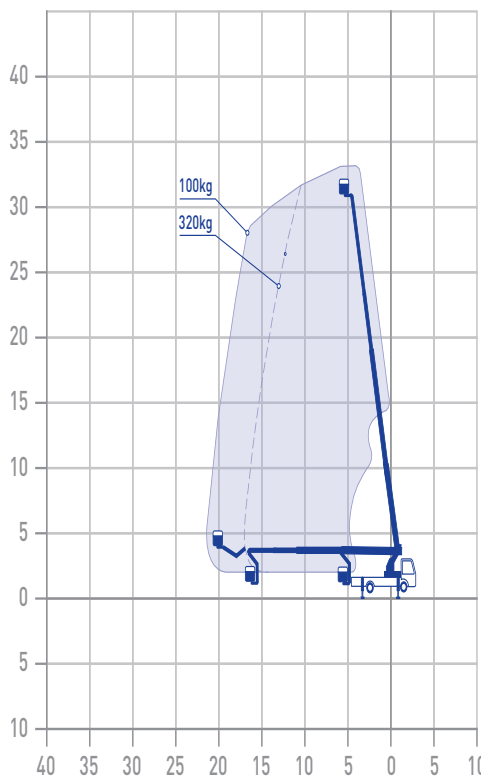
Max Loading
65 kN



Cage Capacity
320Kg



Truck Height
3.56 m



Operated Hire:

- Our plant operators are CPCS, CSCS, IPAF qualified and First Aiders
- Excellent timekeeping, reliability and productivity are assured
- Fully trained, competent and experienced Operatives having worked on many major sites across the UK

Features:

- 33,0-metre working height
- 21,2-metre lateral outreach at 100 kg cage load
 - max. performance on 7.49 t GVW)
- Sturdy, hydraulic cage rotation device 2 x 90°
 - Fully variable and narrow jacking
- Compact vehicle length of only 8.79 metres
 - 320 kg working cage capacity
 - Power to the basket (110V)
- Basket and Chassis fitted with a LED lighting system for safe night working.
- Booms fitted with air and water lines, suitable for high level water testing

Available Attachments:

- Chalwyn valve and spark arrestor can be fitted for industrial applications: Petrochemical plants and refineries
- Chassis-to-earth bonding kits for industrial and high voltage electrical work

APPLICATIONS: TV, Film and Media, Sporting events, Telecoms, Facilities Management, Tree Surgery, Building Maintenance, Construction, Glazing, Roof repairs, Inspections, Signage, Surveying, Window Cleaning.

Palmer Access Ltd.
70 Lancefield Street, Glasgow G3 8JD
e: info@palmeraccess.co.uk t: 0345 222 1932

